

Waterflow Detector Size 2"-8"

FIG-F6001

Specifications

- Equipped with tamper resistant screws to prevent unauthorized entry.
- Two synchronized switches are enclosed in a durable terminal block. Terminals are easy to read and wire.
- Built-In mechanical time delay feature; minimizing the risk of false alarms due to pressure surges or air trapped in the system.
- Offers excellent performance during riser vibrations caused by large in-rushes of water.
- Designed and built for accuracy and repeatability.
- Flow sensitivity range: 4-10 GPM (15-38 LPM).
- Contact rating: 8A@250VAC, 3A@24VDC, 2.5A@ 30VDC.
- UL/ULC Listed, FM Approved.
- COST Certified.

Working Pressure

- 450 PSI

Working Temperature

- 0-68°C

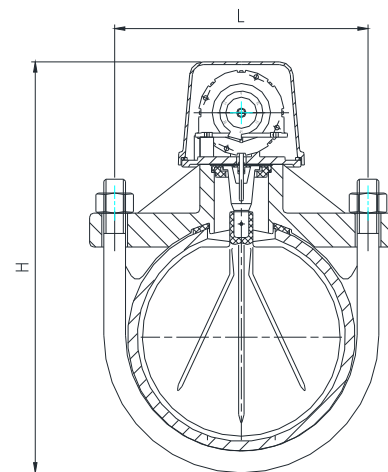
Corrosion Protection

- Fusion Bonded Epoxy Coated Interior and Exterior or Enamel Spray Paint, Interior and Exterior.

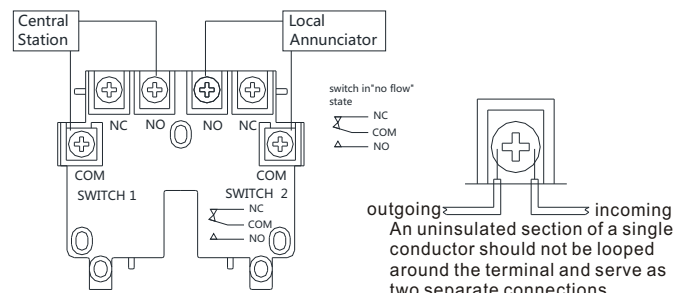
Dimensions

Size	DN 65		DN 80	
	/mm	/inch	/mm	/inch
L	92	3.62	104	4.09
H	200	7.87	220	8.66
Nominal Pipe Size OD	73	2.87	88.9	3.50
Pipe Wall Thickness	3.05-5.16	0.12-0.20	3.05-5.49	0.12-0.22
Size	DN 100		DN 125	
	/mm	/inch	/mm	/inch
L	133	5.24	160	6.30
H	245	9.65	270	10.63
Nominal Pipe Size OD	114.3	4.50	141.3	5.56
Pipe Wall Thickness	3.05-6.02	0.12-0.24	3.40-6.55	0.13-0.26
Size	DN 150		DN 200	
	/mm	/inch	/mm	/inch
L	187	7.36	239	9.41
H	300	11.8	350	13.78
Nominal Pipe Size OD	168.3	6.63	219.1	8.63
Pipe Wall Thickness	3.40-7.11	0.13-0.28	3.76-8.18	0.15-0.32

Schematic



Typical Connections



The designs, materials and specifications shown are subject to change without notice due to the continuous development of our products.

Vane-Type Waterflow Detector with NPT Threads Size 1"-2"

FIG F6001T

Specifications

- Equipped with tamper resistant screws to prevent unauthorized entry.
- Two synchronized switches are enclosed in a durable terminal block. Terminals are easy to read and wire.
- Built-In mechanical time delay feature; minimizing the risk of false alarms due to pressure surges or air trapped in the system.
- Offers excellent performance during riser vibrations caused by large in-rushes of water.
- Designed and built for accuracy and repeatability.
- Flow sensitivity range: 4-10 GPM (15-38 LPM).
- Contact rating: 8A@250VAC, 3A@24VDC, 2.5A@ 30VDC.
- UL/ULC Listed.
- FM Approved.

Working Pressure

- 450 PSI

Working Temperature

- 0-68°C

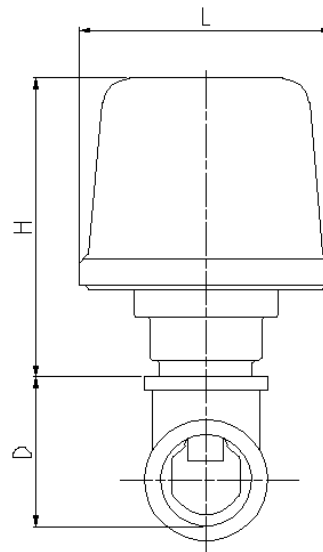
Corrosion Protection

- Fusion Bonded Epoxy Coated Interior and Exterior or Enamel Spray Paint, Interior and Exterior.

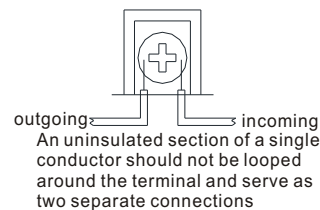
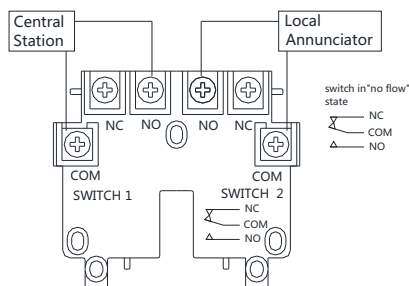
Dimensions

Size	1"		1 1/4"	
	/mm	/inch	/mm	/inch
L	93.2	3.67	93.2	3.67
H	110	4.33	110	4.33
D(Depth)	53.8	2.12	62.5	2.46
Size	1 1/2"		2"	
	/mm	/inch	/mm	/inch
L	93.2	3.67	93.2	3.67
H	110	4.33	110	4.33
D(Depth)	68.8	2.71	81.8	3.22

Schematic



Typical Connections



The designs, materials and specifications shown are subject to change without notice due to the continuous development of our products.



Fire Sprinkler Monitoring Products



WATERFLOW DETECTOR MODEL F6001

SIZE 2"-8"

- Designed for both indoor and outdoor use; temperature range 0° C to 68° C.
- Equipped with tamper resistant screws to prevent unauthorized entry.
- Two synchronized switches are enclosed in a durable terminal block.
- Designed and built for accuracy and repeatability.
- UL/ULC Listed.
- FM Approved.
- GOST Certified.



SUPERVISORY SWITCH FOR INDICATOR POST MODEL WIP

WIP-1/WIP-2/WIP-3

- Designed for both indoor and outdoor use; temperature range -40° C to 60° C.
- Designed for use with Wall or Vertical indicator post.
- Enclosure with die cast finish, red powder coated.
- Two synchronized switches are enclosed in a durable terminal block.
- Designed and built for accuracy and repeatability.
- UL/ULC Listed.
- FM Approved.



SUPERVISORY SWITCH FOR OS&Y VALVE MODEL WOSY

WOSY-1/WOSY-2/WOSY-3

- Designed for both indoor and outdoor use; temperature range -40° C to 60° C.
- Designed for Outside Screw & Yoke (OS&Y) Gate Valve.
- Enclosure with die cast finish, red powder coated.
- Two synchronized switches are enclosed in a durable terminal block.
- Designed and built for accuracy and repeatability.
- UL/ULC Listed.
- FM Approved.



PRESSURE SWITCH MODEL WPS

WPS10-1/WPS10-2/WPS40-1/WPS40-2/WPS120-1/WPS120-2

- Designed for both indoor and outdoor use; temperature range -40° C to 60° C.
- Enclosure with die cast finish, red powder coated.
- Two synchronized switches are enclosed in a durable terminal block.
- Designed and built for accuracy and repeatability.
- UL/ULC Listed.
- FM Approved.

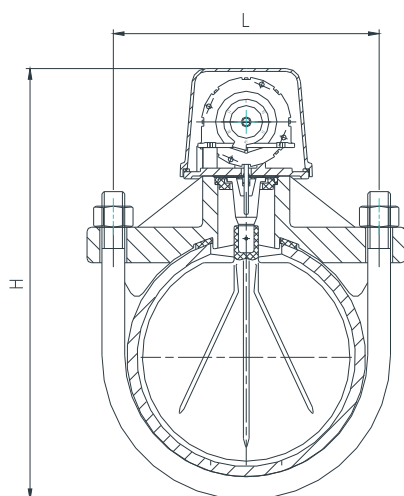
Waterflow Detector Size 2"-8"

Features:

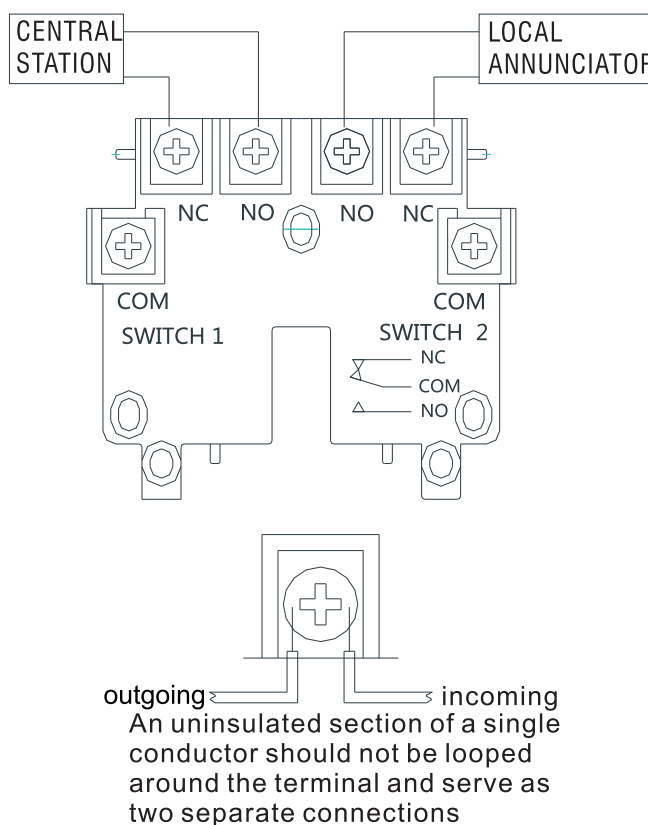
- Flow sensitivity range: 4-10 GPM(15-38LPM).
- Contact rating:
8A@125/250VAC, 3A@24VDC, 2.5A@ 30VDC.
- Working Pressure: 450PSI.
- Working Temperature: 0°C to 68°C.
- Corrosion Protection:
Fusion Bonded Epoxy Coated Interior and Exterior
or Enamel Spray Paint, Interior and Exterior.
- UL/ULC Listed.
- FM Approved.
- GOST Certified.



Schematic



Typical Connections



Dimensions (mm)

Size	DN50	DN65	DN80	DN100	DN125	DN150	DN200
L	84	92	104	133	160	187	239
H	190	200	220	245	270	300	350
Nominal Pipe Size OD.	60.3	73	88.9	114.3	141.3	168.3	219.1
Pipe Wall Thickness	2.77-3.91	3.05-5.16	3.05-5.49	3.05-6.02	3.40-6.55	3.40-7.11	3.76-8.18

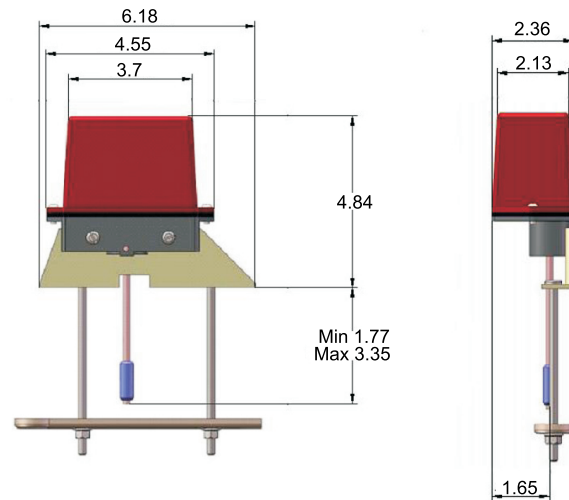
The designs, materials and specifications shown are subject to change without notice due to the continuous development of our products.

Supervisory Switch For Outside Screw and Yoke (OS&Y) Gate Valve WOSY-1/WOSY-2/WOSY-3

Features:

- Weight : 0.6 kg .
- Enclosure :
Cover: Die Cast
Finish: Red Powder Coat
Base: Die Cast
All parts have corrosion resistant finishes
- Cover Tamper:
Tamper Resistant Screws
Cover Tamper Switch Available
3Amps / 5 Amps at 125/250VAC
- Contact Ratings:
WOSY-1: One Set of SPDT
WOSY-2: Two Sets of SPDT
WOSY-3: Two Sets of SPDT and Cover Tamper Switch
10 Amps at 125/250 VAC
2.5 Amps at 30VDC Resistive
- Conduit Entrances:
One knockout and one hole for ½" conduit provided
- Service Use: NFPA 13, 13D, 13R, 72
- UL/ULC Listed.
- FM Approved.

Dimensions /inch

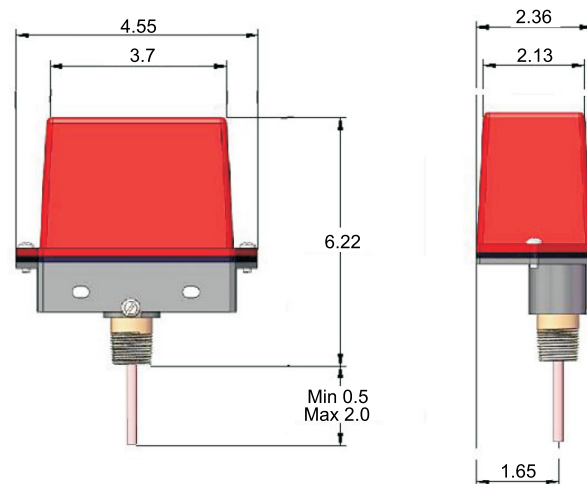


Supervisory Switch For Wall or Vertical Indicator Post WIP-1/WIP-2/WIP-3

Features:

- Weight : 0.45 kg.
- Enclosure :
Cover: Die Cast
Finish: Red Powder Coat
Base: Die Cast
All parts have corrosion resistant finishes
- Cover Tamper:
Tamper Resistant Screws
Cover Tamper Switch Available
3Amps / 5 Amps at 125/250VAC
- Contact Ratings:
WIP-1: One Set of SPDT
WIP-2: Two Sets of SPDT
WIP-3: Two Sets of SPDT and Cover Tamper Switch
10 Amps at 125/250 VAC
2.5 Amps at 30VDC Resistive
- Conduit Entrances:
One knockout and one hole for ½" conduit provided
- UL/ULC Listed.
- FM Approved.

Dimensions /inch



The designs, materials and specifications shown are subject to change without notice due to the continuous development of our products.

Pressure Switch

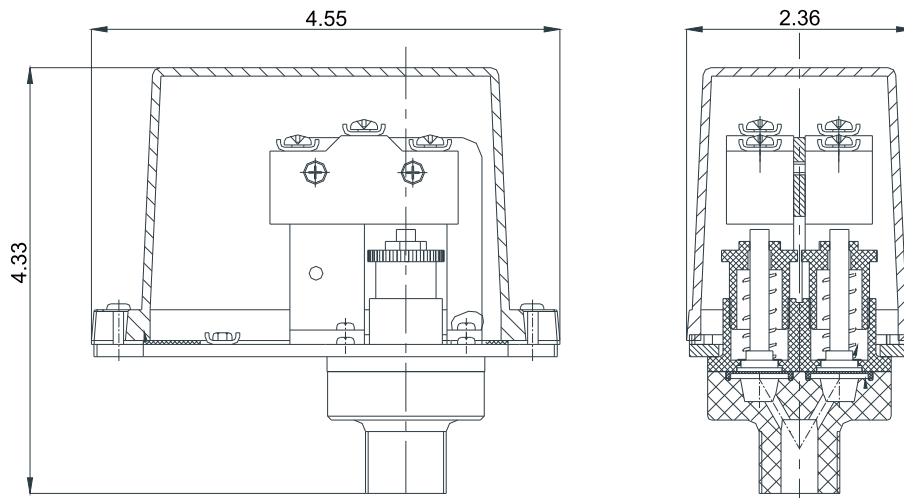
WPS10-1 WPS10-2 WPS40-1 WPS40-2 WPS120-1 WPS120-2

Features:

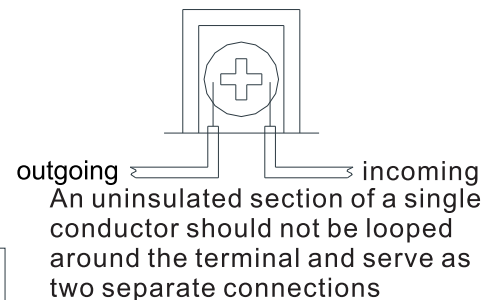
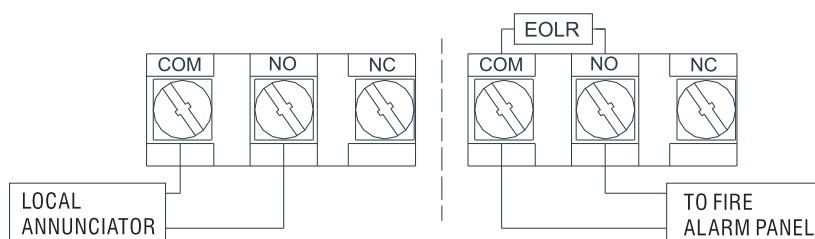
- Maximum Adjustment Pressure Range:
WPS10-1/WPS10-2: 4-20psi
WPS40-1/WPS40-2: 10-100psi
WPS120-1/WPS120-2: 10-200psi
- Factory Setting:
WPS10-1, WPS10-2: 4-8 psi
WPS40-1: operates at decreasing pressure at 30 psi
WPS40-2: operates at increasing pressure at 50 psi and decreasing pressure 30 psi
WPS120-1: operates at decreasing pressure at 110 psi
WPS120-2: operates at increasing pressure at 130 psi and decreasing pressure 110 psi
- Approximate Differential:
WPS10-1/WPS10-2: 3 psi throughout range
WPS40-1/WPS40-2: 3 psi @ 10psi & 6psi @ 100psi
WPS120-1/WPS120-2: 3 psi @ 10psi & 9psi @ 200psi
- Contact Rating:
10A@125/250VAC,
2.5A@30VDC
- UL/ULC Listed.
- FM Approved.



Schematic&Dimensions /inch



Typical Connections



The designs, materials and specifications shown are subject to change without notice due to the continuous development of our products.