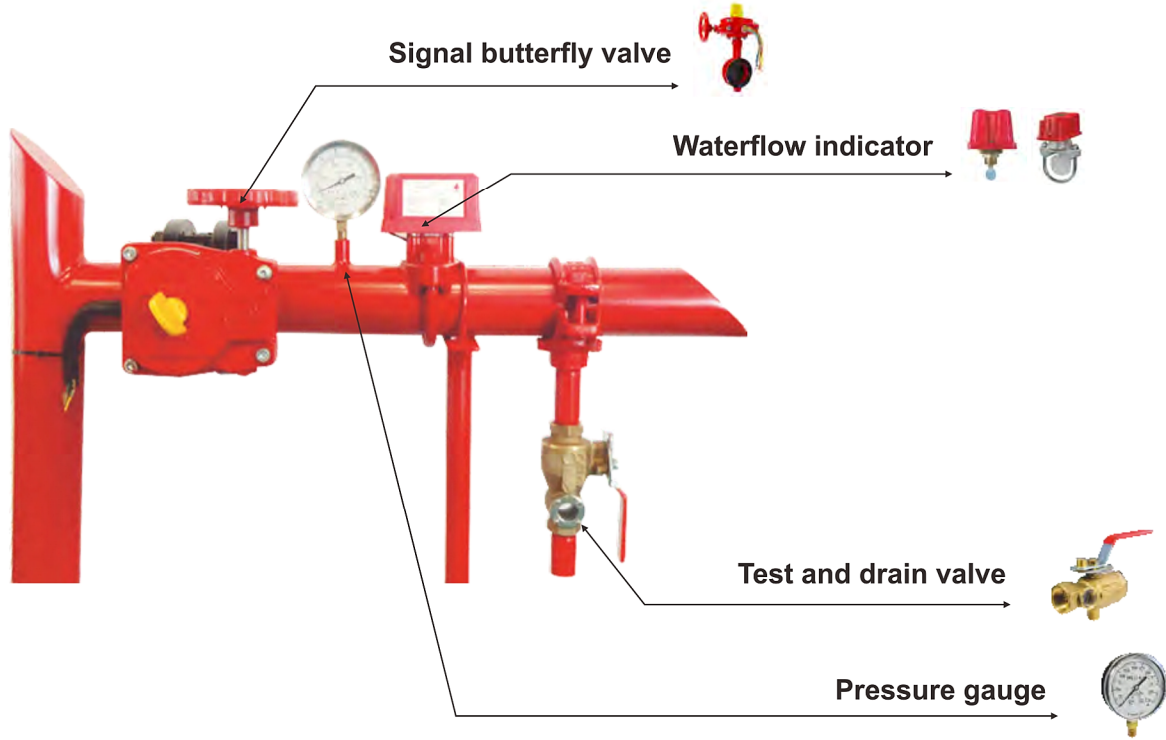


Zone control valve

Zone control valve is a combined unit of 4 parts: signal butterfly valve, waterflow indicator, pressure gauge and test & drain valve.

All of them are UL Listed and FM Approved, conforming to BS 5306-2 / EN 12845.

They are assembled on fire pipeline to separates the fire area into small distribution zone for indication and control. Because of fire sprinkler or test valve activation, the indicator detects water flow and transmits signal to control system. After fire suppression, butterfly valve gets signal and shut down the water flow for recovering the system.



Component Specification

Butterfly valve	Test and drain valve	Waterflow indicator	Pressure gauge
See TPMC catalog V06-V08	See TPMC catalog V33	See TPMC catalog V34	See TPMC catalog V35

Others assembly units

ERW or SMLS tube	Electrical cable	Junction box
Red painting or FEB coating, see TPMC catalog P series	UL / LPCB fire cable, see TPMC catalog C series	IP54, dual entry, single conduit outlet