

واردات و فروش تابلو برق پمپ های آتش نشانی

شرکت مهندسی صباتام صنعت

www.sabatam.com



TORNATECH

LISTEN DEVELOP LEAD

GPx Series

Full Service - Electric Fire Pump Controllers



Standard Features

- ViZiTouch V2 operator interface
- Pressure and event recorder
- Voltage and amperage display
- Single operator for both isolating switch and circuit breaker
- Surge arrestor
- Lifting lugs
- Run test push button
- Available with automatic power transfer switch
- Emergency start handle
- Start and stop pushbuttons
- Locked rotor protector
- Phase reversal indication
- Remote start / deluge valve start provision
- Pressure transducer and run test solenoid valve externally mounted
- Gland plate
- Audible alarm



Starting Methods

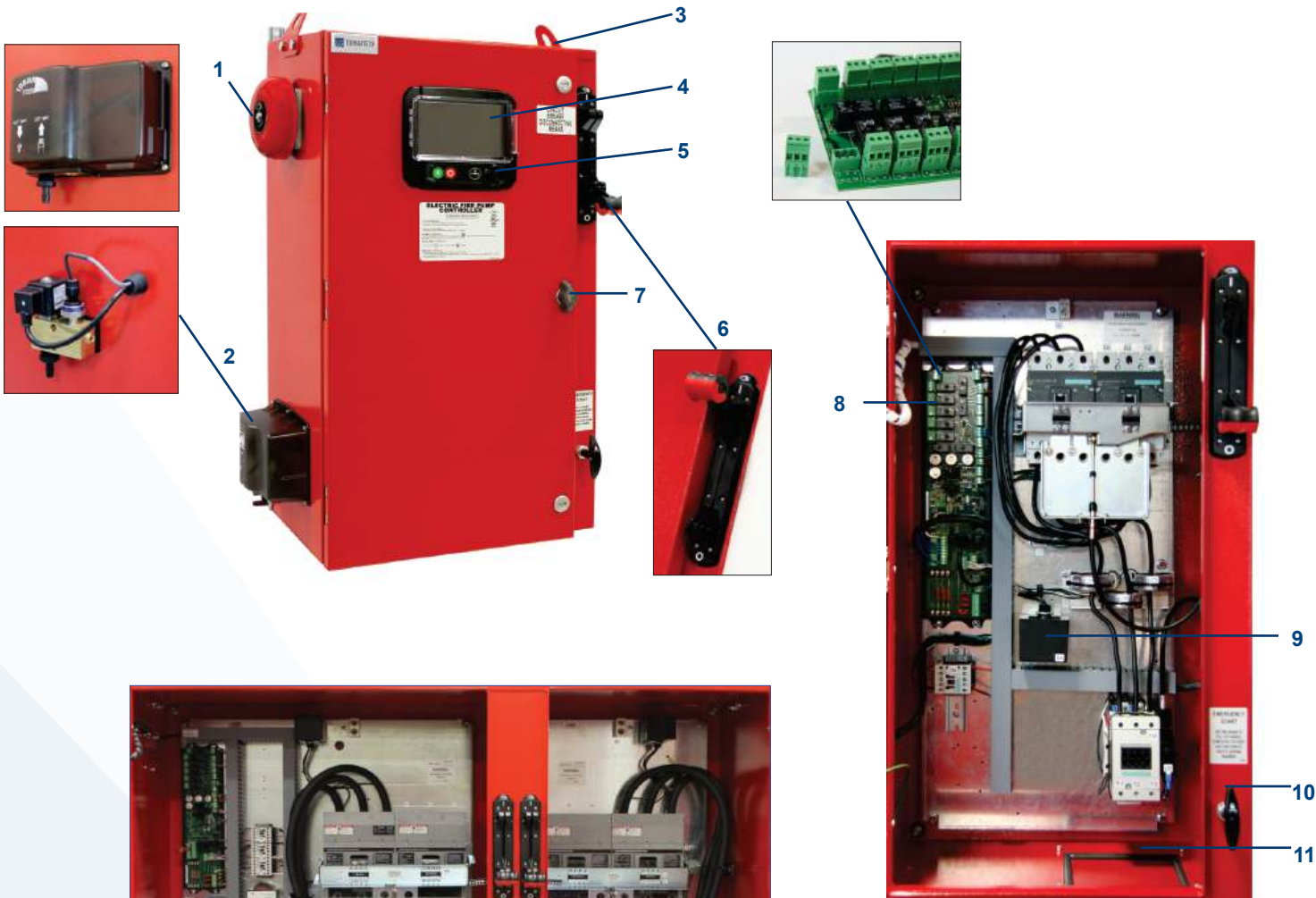
- Model GPA - Across-the-line
- Model GPY - Wye-Delta Open
- Model GPP - Partwinding
- Model GPR - Autotransformer

	Tornatech Inc Laval, Canada	Tornatech Europe SA Wavre, Belgium	Tornatech FZE Dubai, UAE
Standard Enclosure Rating	NEMA 2	IP55	NEMA 2
 OPTIONAL	Optional	Standard	Optional
	Optional	Optional	Optional



1. Alarm bell
2. Externally mounted pressure transducer and run test solenoid valve with protective cover
3. Lifting Lugs
4. ViZITouch V2 operator interface
5. Exterior USB Port
(Interior USB port also supplied)
6. Custom designed Isolation switch / Circuit breaker operator handle

1. Key lock
2. Remote alarm contacts with removable terminals
3. Surge arrester
4. Custom designed emergency start mechanism with integrated limit switch
5. Gland plate
6. Automatic power transfer switch



GPA MODEL SHOWN



GPW + GPU MODEL SHOWN

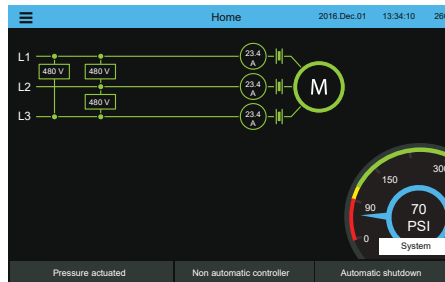


ViZiTouch V2 Operator Interface

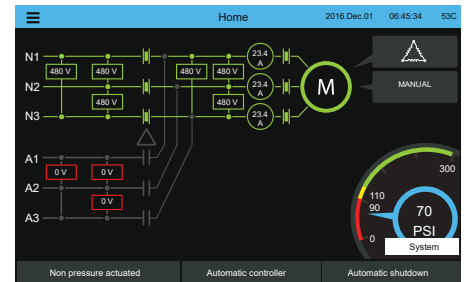


HOME SCREEN

Electric Fire Pump Controller



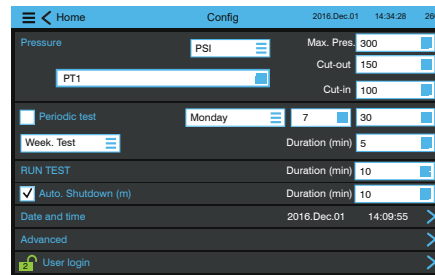
Electric Fire Pump Controller with Automatic Transfer Switch



ON-SCREEN MENU

- Home
- Alarm
- Configuration
- History
- Service
- Manual
- Languages

SETTINGS



EVENTS

Time	Event
2016.12.01 14:28:52	Under Voltage: ACTIVE
2016.12.01 14:28:52	Under Voltage: INACTIVE
2016.12.01 14:28:2	Alarms Reset
2016.12.01 14:08:09	ACB in OFF or Tripped: INACTIVE
2016.12.01 14:12:06	Alternate is Tripped/Open: INACTIVE
2016.12.01 14:11:22	Pump On Demand: INACTIVE
2016.12.01 14:09:55	Control Voltage not Healthy: ACTIVE
2016.12.01 14:08:46	Generator: Started
2016.12.01 14:03:11	Motor: Started in Automatic
2016.12.01 14:03:03	Loss of Power: ACTIVE

HISTORY/STATISTICS

Category	Value
First Service	Statistics
Since	2016.12.01 14:28:09
On Time	61-04-08-27
Motor	On Time: 0-00-08-57
Start Count	20
Last Started On	2016.12.01 14:08:46
Pressure	Minimum: 99.1 PSI

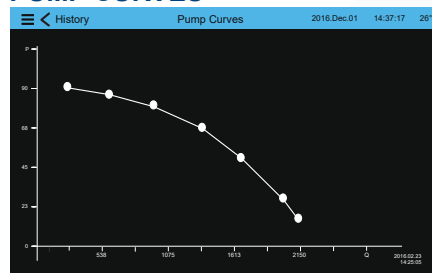
SERVICE

Field	Value
Commissioning date	2016.12.01 14:28:52
Last service date	2016.12.01 14:28:52
Service interval	1 year
Next service due	2016.12.01 14:28:52
Jockey pump cut-out	110
Jockey pump cut-in	130

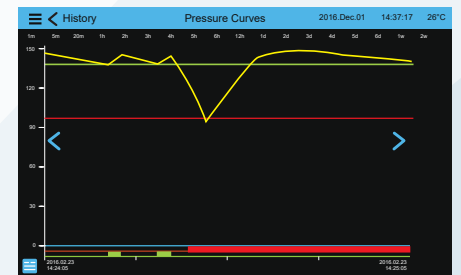
VIZITOUCH V2 MAJOR FEATURES INCLUDE:

- Touch screen operation with 7" color display and intuitive graphics
- Multi-language
- Upgradable software
- Password protected

PUMP CURVES



PRESSURE CURVES



GPX SERIES / VOLTAGE / HP / SHORT CIRCUIT WITHSTAND RATING / SEISMIC CERTIFICATION

Model	Voltage	HP	Short Circuit Withstand Rating	Seismic Certified
GPA GPA+GPU	200V - 208V	5-150	100kA	Yes
		200	50kA	No
	220V - 240V	5-200	100kA	Yes
		250	50kA	No
GPP GPP+GPU	380V - 416V	5-300	100kA	Yes
		350-450	50kA	No
GPY GPY+GPU	440V - 480V	5-400	100kA	Yes
		450		No
		500	50kA	Yes
GPR GPR+GPU	200V - 208V	5-150	100kA	Yes
		200	50kA	No
	220V - 240V	5-200	100kA	Yes
		250	50kA	No
	380V - 416V	5-300	100kA	Yes
		350-450	50kA	No
GPW GPW+GPU	440V - 480V	5-400	100kA	Yes
		450		No
		500	50kA	No
	575V - 600V	5-500		Yes

Model	Voltage	HP	Short Circuit Withstand Rating	Seismic Certified
GPS GPS+GPU	200V - 208V	5-100	100kA	Yes
		150		No
		200	50kA	No
	220V - 240V	5-150	100kA	Yes
		200		No
		250	50kA	No
	380V - 416V	5-250	100kA	Yes
		300		No
		350-450	50kA	No
	440V - 480V	5-300	100kA	Yes
		350		No
		400		
		450		
		500		
575V - 600V	5-400	50kA	Yes	
	450		No	
	500			

AMERICAS

Tornatech Inc.
 Head Office
 Laval, Quebec, Canada
 Tel: + 1 514 334 0523
 Toll free: + 1 800 363 8448

EUROPE

Tornatech Europe SA
 Wavre, Belgium
 Tel: + 32 (0) 10 84 40 01

MIDDLE EAST

Tornatech FZE
 Dubai, United Arab Emirates
 Tel: + 971 (0) 4 821 7555

ASIA

Tornatech Pte Ltd.
 Singapore
 Tel: + 65 6795 8114
 Tel: + 65 6795 7823